

SuccessStory at APRESAN



**Smart quality control for
coating with PLEVATEC pro**

The Situation



APRESAN Turkish producer of coated fabrics primarily for the high-end market for different areas of application; mostly doing paste coatings and multiple layers (e.g for blackout).

Due to already existing and well-working PLEVA system the satisfied customer has invested in the second online application measurement system AF 310 with the recently launched process visualization and control PLEVATEC pro AddControl.



Goals of the customer:

Homogenous coating application without differences in thickness

- across the width (side/center/side)
- and length

and **online quality control**

The Solution

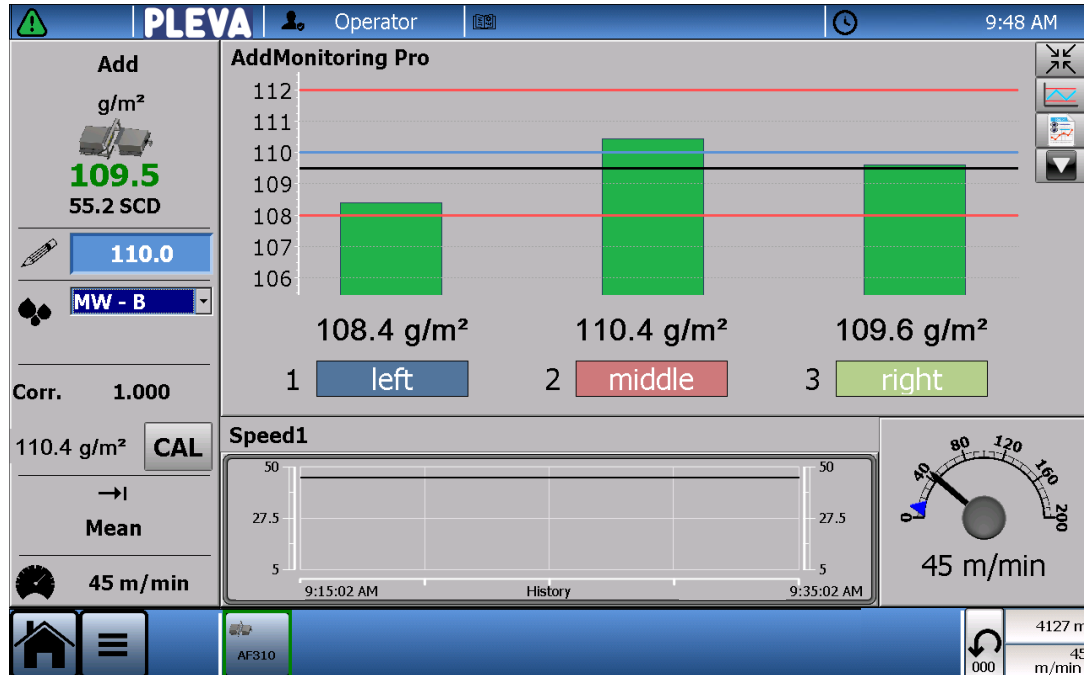


Fig.: Screenshot of PLEVATEC pro
Visualization of coating application (side/center/side)
with individually configurable tolerances

AF 310 application measurement system after coating unit in combination with **PLEVATEC pro** process visualization and control enables the customer to:



Real time information of add on



Adjust the coating knife perfectly to ensure homogeneous application



Monitor and record coating application over entire length and width

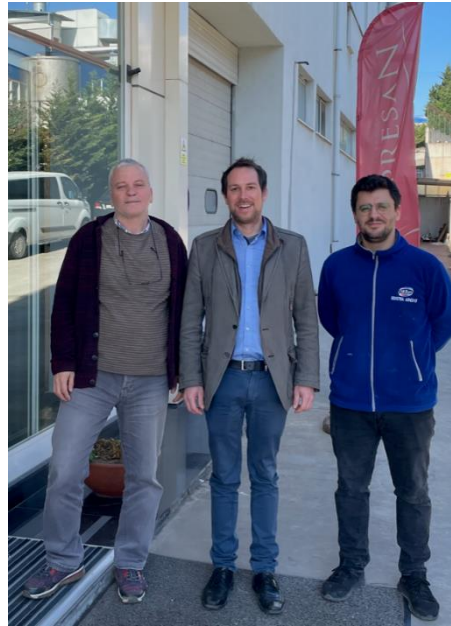


Evaluate and operate all important parameters directly via PLEVATEC pro



Directly carry out the quality control

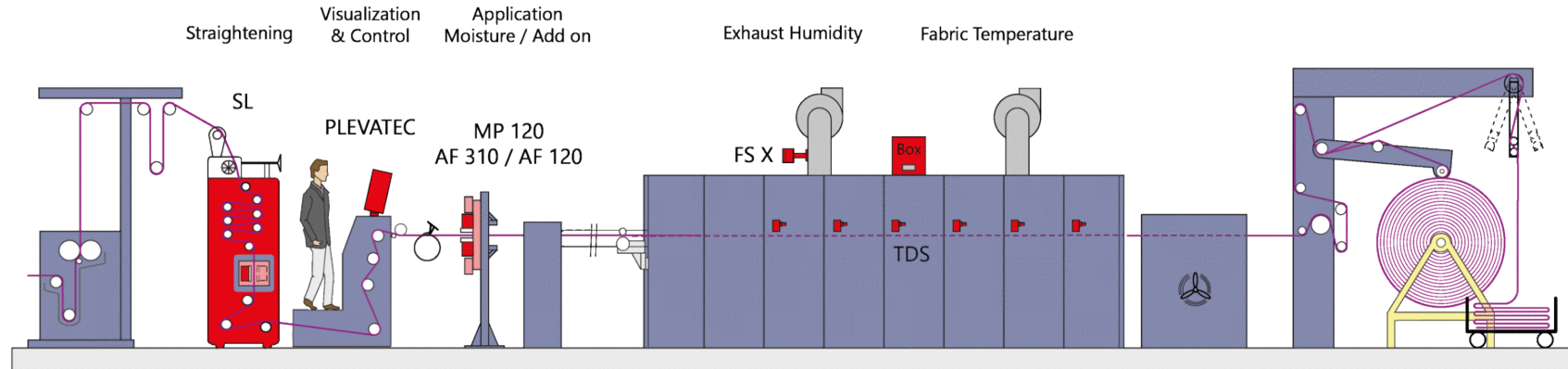
The Success



With the used system, even the smallest changes of the coating application become visible. **The result is: more constancy, reproducibility and evenness.** In addition, the system can be integrated into the company network in order to have an overview of all values directly from the office at any time, or to share data via OPC UA.

And for best usage on site a training in the local language was provided by the PLEVA-Team.

The Sustainable Success



- Minimization of set-up/preparation time
- Production with targeted results directly from the first meter inside the tolerance window

Our impact as your **HEROES FOR SUSTAINABILITY**

- Only required chemicals are used, which saves resources (up to some tons per year)
- Less rejected/second choice goods are produced
- No need for cut-outs of fabrics for checking the coating

