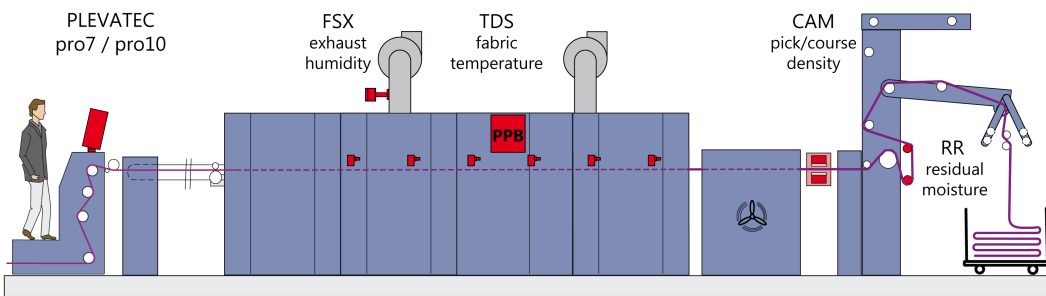


Dens'nDry PLEVATEC

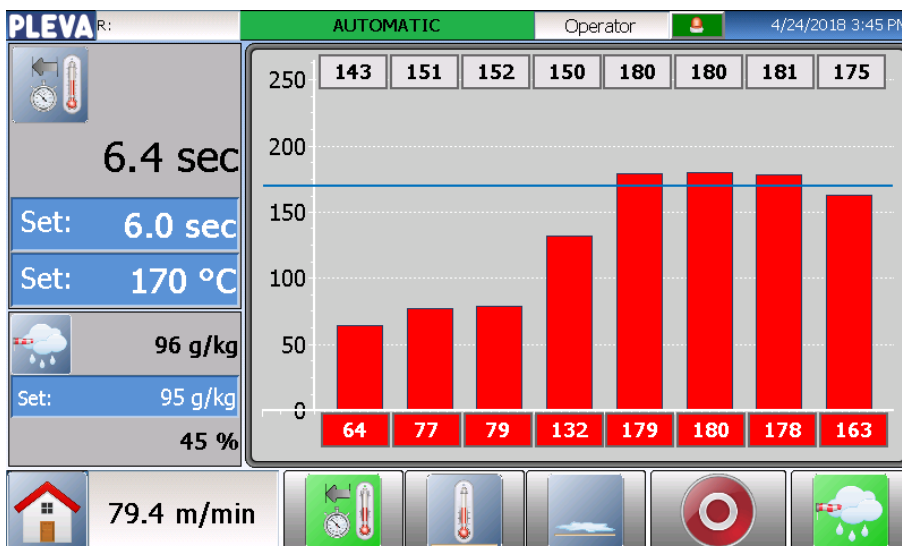
Perfect control of drying and fixation processes
and/or density at stenters or shrinkage machines



The **Dens'nDry PLEVATEC** control system consists of PLEVATEC pro7 or pro10 visualization panel with PLC in one cabinet and provides **DryControl** and/or **DensityControl** functionality depending on the ordered software packages and sensors:

DryControl:

Measurement of fabric temperature, residual moisture and exhaust humidity and control of dwell time, machine speed and exhaust volume.



Max. production speed

Highest fabric quality

Reduced energy costs

1 PLEVA Process Box with

Max. 8 TDS sensors
for fabric and air
temperature

Max. 1 FSX sensor
for exhaust humidity

Max. 1 residual
moisture sensor
RR WH or RR 1.1H or RR 3.1H

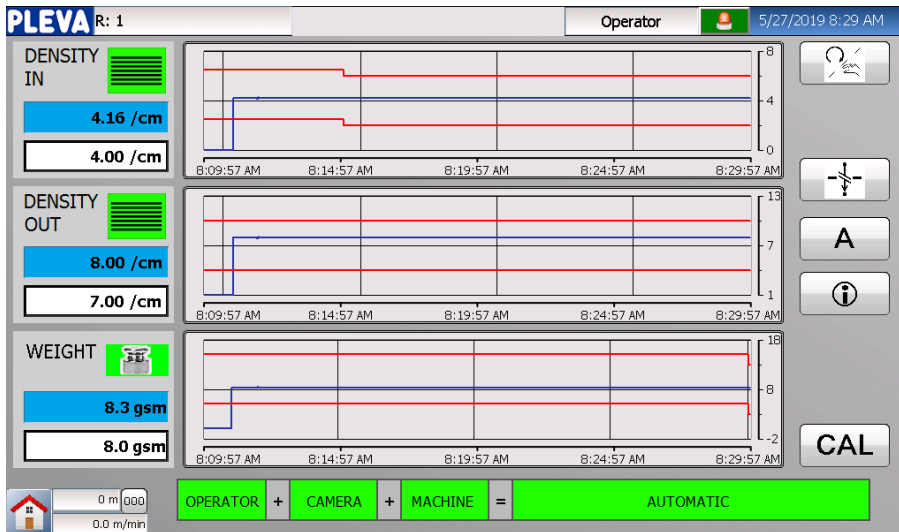


DensityControl:

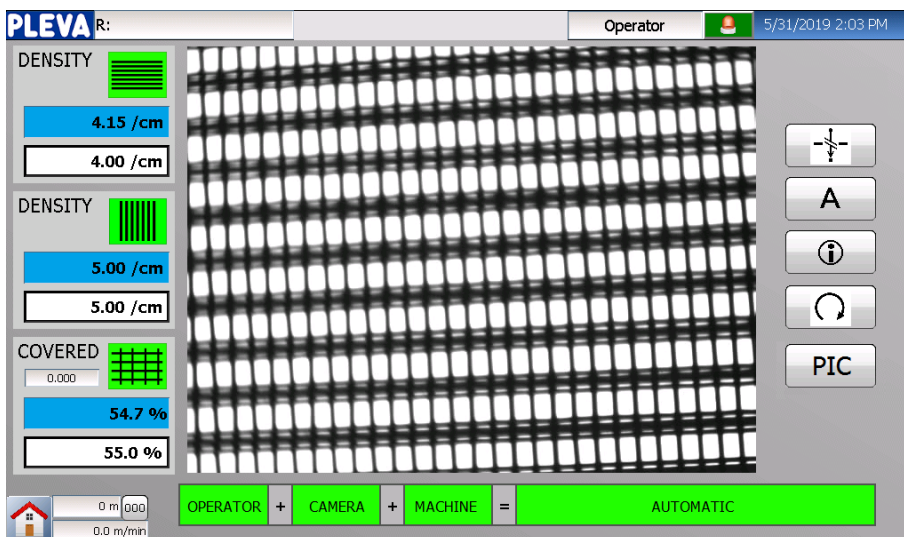
Measurement and monitoring of pick/course density with one CAM in the outlet of a stenter frame or a shrinkage machine and calculation of weight out of density.

Option: Control of density via overfeed (stenter) or belt pressure (shrinkage machine)

Option: 1 CAM In the inlet for advanced feed-forward control:



Option: Fabric picture on panel with covered area calculation:



Technical Data:

Ambient temperature: max. 60 °C
 Power supply: 230 V AC (+/- 10 %), 50/60Hz
 Panel type pro7 or pro10: 7" or 10.1" touch screen coloured
 Weight protective cabinet: approx. 25 kg (wall mounting)

Control outputs on PLC:
 Free of potential for overfeed/belt pressure and chain speed
 0...10 V DC for exhaust inverter

Options: Stand socket variable according to customer requirements
 Remote access control

Uniform density and weight
 at stenter
 or shrinkage machine

Recipes
 Trend graphs
 7-day history
 CSV data files
 via LAN or USB
 Remote access control

Energy savings
 Increase of productivity
 Process transparency
 Reproducibility

